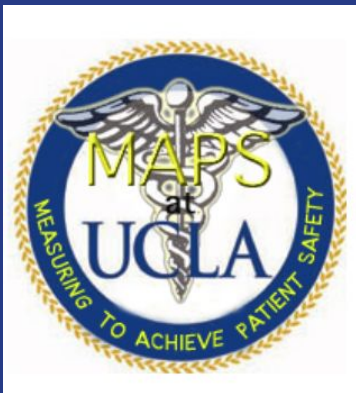


Contact us at uclamaps@gmail.com



M.A.P.S. INFORMATIONAL SESSION 9/27/2016

Safety & U.S. Healthcare

- ❑ 98,000 deaths occur in the US each year due to errors in medical care.
- ❑ 50% of these occurrences are preventable.
- ❑ The healthcare industry is determined to improve and is implementing strict regulations towards patient safety.

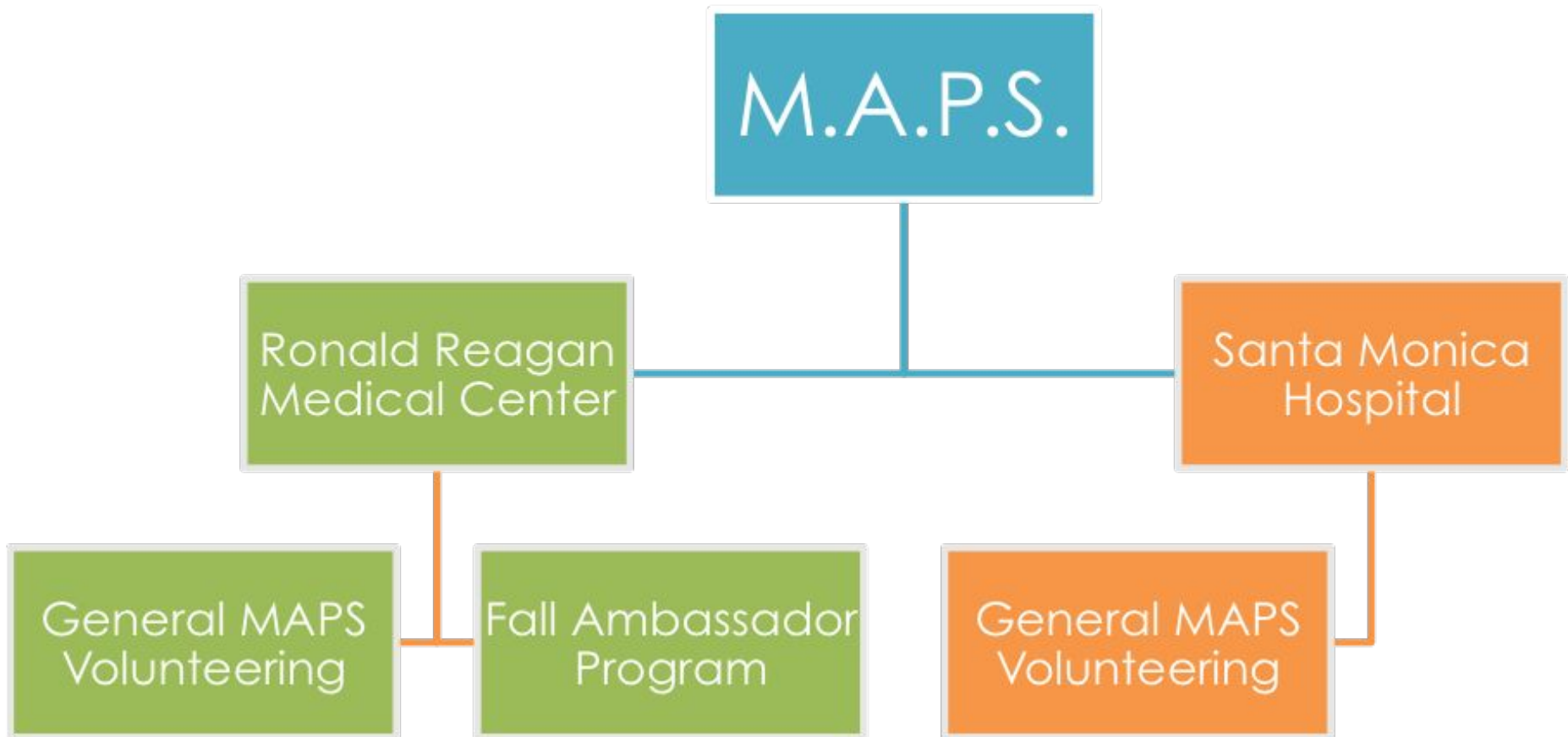
M.A.P.S. Objective

- M.A.P.S. stands for Measuring to Achieve Patient Safety
- Our aim:
 - *“To facilitate improvement of patient safety processes by observing clinical processes at UCLA Medical Center and Outpatient Clinics, and providing highly reliable feedback to the leadership and management of UCLA Healthcare”.*

M.A.P.S. Overview

- ❑ M.A.P.S. is an observational study.
- ❑ The project will collect data in various clinical settings: regular floors, ICU's and the ER.
- ❑ The collected data is compiled monthly into a compliance report for the nurse leaders and hospital administration.

3 Programs at M.A.P.S



M.A.P.S. 2016 Recruitment

We are recruiting for our three programs:

1. General M.A.P.S. volunteering at Ronald Reagan Medical Center (RRMC)
2. General M.A.P.S. volunteering at Santa Monica Hospital (SMH)
3. Fall Ambassador Program (FAP) at RRMC

General M.A.P.S. volunteering at RRMC is near **full** capacity!

General M.A.P.S Volunteering

Observations:

- Hand washing.
- Blood drawing.
- Medication administration.
- Personal Protective Equipment (PPE).
- Physician rounding.
- Phlebotomy observations.
- All observations are conducted using a paperless application through smartphones, laptops, or tablets.

Some of the Major Units in RRMC

- ❑ Emergency Department
- ❑ Neuroscience/Trauma ICU
- ❑ Cardiac Units
- ❑ Pre-Procedure, Surgical Observation, Post-Anesthesia Care Units
- ❑ Pediatric Units
- ❑ Newborn ICU
- ❑ Surgical Units
- ❑ Transplant/Surgical ICU
- ❑ Medicine ICU

And many more....!

General Volunteering in Santa Monica Hospital

- Volunteers conduct the same observations as volunteers at Ronald Reagan
 - Each shift at SMH counts for 2 units of volunteering credit
- Smaller hospital allows for more direct interaction with hospital staff
- Convenient and free transportation to the hospital
- Current units: Emergency Department and 4 Intensive Care Unit
 - Adding more units soon!

Fall Ambassador Program at RRMC

- Designed to assist hospital staff in reducing number of patient falls and fall injuries
- Minimizing hospital fall risk is an very important aspect of patient care
- 2% ~15% of patients experience at least one fall during their hospital stay
- Around 30% of these falls cause bruises, fractures, intracranial bleeding and even death

Fall Ambassador Program at RRMC

- FAP Volunteers will carefully assess individual patient's fall risk
- Great way to interact with healthcare professionals, such as nurses and care partners
- If you are in FAP, you will be assigned:
 - 4 FAP units (2 Medicine Units, Neuroscience Unit and Surgical Unit)
 - 4 General Volunteering Units
-

Volunteer Expectations

- ❑ Complete one training session.
- ❑ Attend the General Volunteer Meeting held every quarter.
- ❑ 8 units per month. 2 hours of observation per unit.
 - ❑ $8 \times 2 = 16$ hours per month.
 - ❑ Can volunteer whenever in the week.
 - ❑ Recommended: 4 hours per week

Application Process Overview

For ALL interested volunteers, please submit:

1. CV or Resume
2. A short paragraph (1000 characters max) answering:
“Why are you interested in applying to M.A.P.S.?”
Append this to your CV.

For FAP applicants:

- You must submit the Fall Ambassador Program Application in addition to 1 + 2

All details are found on our website:

uclamaps.wordpress.com

Application Deadlines

- **Application Deadline:**
Week 3 Saturday (10/15/2016) at 11:59PM
- Interviews: Week 5
- Application Results: Week 6
- Entire process (including training) takes about one quarter to complete
- We only train during the first three weeks of every quarter (Fall, Winter, Spring)



Questions?

Thank You!

Email us at:

uclamaps@gmail.com

Visit our website:

<https://uclamaps.wordpress.com>

and “like” us on Facebook

[@uclamaps](#)